

Kerio WinRoute Firewall 6

for secure access and content control

Kerio WinRoute Firewall provides a multi-layered security architecture designed to keep network environments, servers and users safe. With integrated firewall, VPN, anti-virus and content filtering, Kerio helps administrators protect their network while securely and reliably connecting their branch offices and remote workers.

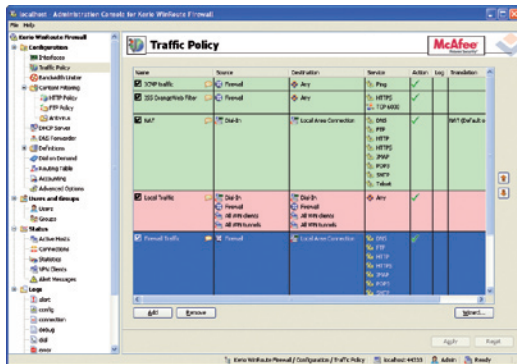
SECURE FIREWALL AND VPN

Stateful network firewall

ICSA Labs-certified Kerio WinRoute Firewall offers detailed rule definition to perform stateful packet and protocol inspection of all outgoing and incoming Internet traffic. A network rules wizard assists in the rapid setup of the firewall.

Traffic policy

Security is based on traffic rules which allow easy configuration of packet filters, NAT (network address translation), port mapping and access control from one comprehensive table.



User-specific network management

Each user in the network can be required to log into Kerio WinRoute Firewall before connecting to the Internet. That allows for restrictive security and access policies to be applied based on the specific user, rather than the IP address.

Active Directory mapping

Transparent Active Directory support in Kerio WinRoute Firewall simplifies user account mapping to Windows domains.

VPN gateway

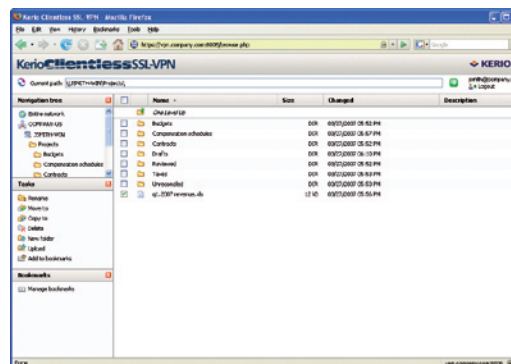
Fully integrated into Kerio WinRoute Firewall is a SSL-based VPN Gateway which can easily be configured to create both client-to-server and server-to-server VPN tunnels. This flexibility allows both branch office networks and individual remote workers to securely connect to the corporate LAN.

Kerio VPN Client

Using SSL encryption, Kerio VPN Client for Windows offers instant secure remote access to corporate network resources. After a simple installation process, Windows users are one click away from their networked shared files or corporate intranet.

Clientless VPN

For remote users without access to their own system or running on a non-Wintel machine, Kerio Clientless SSL-VPN gives access to the corporate network for file sharing from any browser. Using the file access privileges configured in Active Directory, the VPN server allows users to upload and download files from anywhere on the Internet.



UNIFIED THREAT MANAGEMENT

- Stateful network firewall
- User-specific policies
- VPN server and client
- Integrated anti-virus
- Content filter
- On-demand web reporting
- Bandwidth limiter

INDUSTRY AWARDS



ICSA Labs certified since 2003



About Kerio

Innovating in Internet security and messaging since 1997, Kerio Technologies Inc. provides Internet messaging and firewall software solutions for small to medium sized businesses across the globe. Kerio's corporate headquarters are located in San Jose, California.



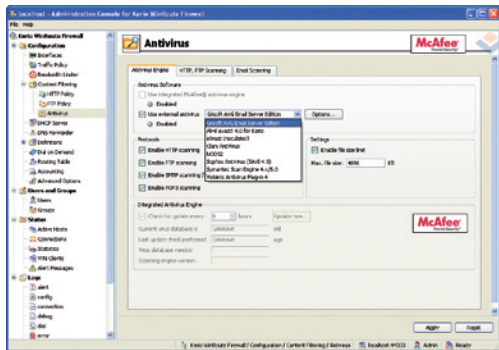
Kerio WinRoute Firewall 6

for secure access and content control

CONTENT CONTROL

Gateway anti-virus

Kerio WinRoute Firewall provides optional gateway virus scanning of inbound and outbound email (POP3, SMTP) and web traffic (HTTP, FTP), protecting against viruses, worms and other malware. Having anti-virus installed at the perimeter of the local area network ensures that all Internet traffic is always scanned.



Dual anti-virus protection

With two different anti-virus engines running simultaneously, Kerio WinRoute Firewall provides double the protection against viruses.

The integrated McAfee Antivirus can run alone or in conjunction with Grisoft, Symantec, Sophos, Eset, CA, Alwil, ClamAV or Deerfield anti-viruses.

Content filtering

Kerio WinRoute Firewall offers a variety of content security features such as blocking MP3 music downloads, filtering out potentially dangerous executable files or blocking pop-up windows.

Peer-to-Peer control

With Kerio WinRoute Firewall, administrators can manage the use of P2P applications to improve network utilization, enhance security and protect against legal liabilities.

Surf protection

With the ISS Orange Web Filter, Kerio WinRoute Firewall prevents users from accessing inappropriate content. Combined with user-specific network management, administrators may assign every user their unique web access restrictions. The continuously updated database, divided into 58 different content categories, contains more than 60 million URLs with over 2.6 billion web pages classified.

Statistics and reporting

On-demand reporting can be accessed from a web browser by administrators, managers and business owners to view user internet activity such as top web sites visited, protocols used, and bandwidth usage. Statistics are displayed in graphical charts to help identify internet usage abuse, locate bottlenecks and track down other network related issues.



Bandwidth Limiter

The Bandwidth Limiter helps Kerio WinRoute Firewall provide optimal data throughput for interactive or critical business applications such as VoIP.

Administrators can throttle users who download large files to ensure that other users are not affected.

Alternatively, the Bandwidth Limiter can slow down the Internet for those users who exceed their configured daily or monthly quotas.

SYSTEM REQUIREMENTS

Kerio WinRoute Firewall

Pentium III
1 GB RAM
1 GB disk space
2 network interfaces
Windows 2000/XP/2003/Vista
(32-bit or 64-bit editions)

Kerio VPN Client

Pentium III
512 MB RAM
5 MB disk space
Windows 2000/XP/2003/Vista
(32-bit or 64-bit editions)

Kerio SSL-VPN Client

Internet Explorer 6/7
Firefox 2
Safari 2

Kerio Technologies Inc.

111 West Saint John Street
Suite 1100
San Jose, CA 95113
USA
Phone: +1 (408) 496-4500
www.kerio.com

Kerio Technologies UK Ltd.

Enterprise House, Vision Park
Histon
Cambridge CB24 9ZR
United Kingdom
Phone: +44 1223 202 130
www.kerio.co.uk

Kerio Technologies s. r. o.

Anglické nabřeží 1/2434
301 49 Plzeň
Czech Republic
Phone: +420 377 338 901
www.kerio.cz